

Another green pedestrian trafficable roof for MONA

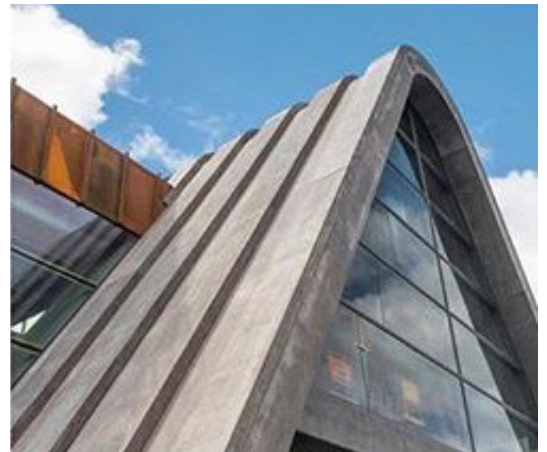
APPLICATION	Flo-cell 20mm & Turfcell drainage cells
PROJECT LOCATION	The Museum of Old & New Art - Hobart
PROJECT DETAILS	Pedestrian trafficable grass roof on the new "Pharos" pavillion
PROJECT COMPLETION	May 2018

The Museum of Old and New Art, has opened a new wing, Pharos, and in keeping with their past practice have again chosen Atlantis[®] products for the grassed roof area; Atlantis proven combination of the Atlantis[®] Turfcell[®] 52mm drainage cell as the turf reinforcement structure and the Atlantis[®] Flo-cell[®] 20mm drainage cell as the under drain.



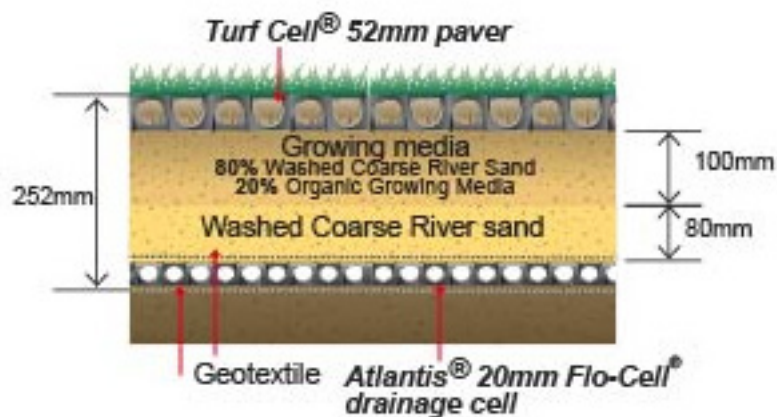
The roof was first waterproofed and then 1,000m² of Atlantis[®] 20mm drainage cell were laid there on and covered by a layer of water permeable geotextile. A 100mm layer of compacted washed river sand was placed on the geotextile and a compacted layer of good permeable soil covered the sand layer., and a layer of 1,000m² Atlantis[®] Turf Cell™ 52mm drainage cells was placed on the good permeable soil layer and filled with top soil and turf placed on top of that.

To ensure intimate contact between the roots and the soil within the 52mm drainage cell, the turf was rolled with a heavy roller to press the roots into the soil within the drainage cell.





The high structural strength of the Atlantis® Turf Cell™ 52mm drainage cell, permitted pedestrian traffic, while preventing any compaction of the soil, allowing for vigorous horizontal and vertical root growth within the 52mm drainage cell creating a lush lawn and permitting surface water absorption and infiltration. While the 20mm under drain ensures that there was adequate drainage, to remove excess water.



© Copyright 2018 Atlantis Corporation International Pty Ltd

ATLANTIS CORPORATION INTERNATIONAL PTY LTD

PHONE: + 612 9417 8344

FAX: + 612 9417 8311

EMAIL: info@atlantiscorp.com.au

WEB: www.atlantiscorp.com.au

NOTE: Atlantis products are manufactured from carefully selected high quality recycled materials. The strength of the recycled plastic could vary slightly due to raw material composition, country of manufacture, manufacturing process and external conditions. All trademarks are the property of Astral Property Pty Ltd. **DISCLAIMER:** All information provided in this publication is correct to the best knowledge of the company and is given out in good faith. This information is intended only as a general guide, no responsibility can be accepted for any errors, omissions or incorrect assumption. As each project is unique, and as Atlantis Corporation Australia Pty Ltd and its distributors and agents world wide have no direct control over the methods employed by the user in specifying, installing or supervising of its products hence no responsibility is accepted by Atlantis Corporation Pty Ltd and its distributors and agents world wide. Users should satisfy themselves as to the suitability of the product for their purpose. All product designs, and specification are subject to change without further notice. All Atlantis products are tested in approved laboratories, and safe allowed tolerances should be practised in the actual field, to compensate for any unforeseen situations, on site and on products. **COPYRIGHT:** All material contained within this brochure is subject to copyright, and belongs to Atlantis Corporation Australia Pty Ltd. No part of this brochure may be reproduced or transmitted in any form or by any means, electronic, mechanical, photocopying, recording or otherwise, without prior written permission of Atlantis Corporation Australia Pty Ltd. Copyright @ 2018