



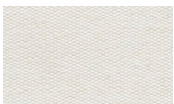
### Features at a glance

- Marine grade aluminium frame and stainless steel hardware for longevity
- Elegant and simple to operate tilt system
- Rotates 360°
- Durable high performance hub and fittings
- Custom designed protection cover included

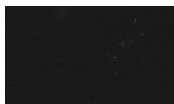
### Canopy

- Commercial Grade: 100% solution dyed
- Maintenance: All fabrics can be washed and are replaceable
- Shade Rating: UPF 50+
- Colourfastness: 4/5
- Weight: 290 g/m2
- Waterproof Rating: >300mm water column

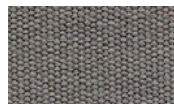
### Stock Colours\*



Egg Shell White



Black Widow



Boulder Grey

\*other custom colours available on request.

### Mounting Options

#### Surface Plate

For deck, patio and concrete mounting.



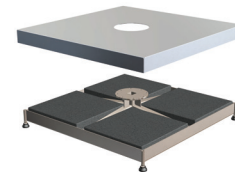
#### In-Ground Anchor

For mounting with a concrete footing.



#### Free-Standing Base + Aluminium Base Cover\*

For complete customised maneuverability.



\*Concrete Pavers are required for ballast (not supplied)  
Castor Wheels are optional.

## BEST-IN-CLASS WARRANTY

Relax easy knowing your outdoor umbrella purchase is protected by the industry's best warranty (conditions apply) and customer support.



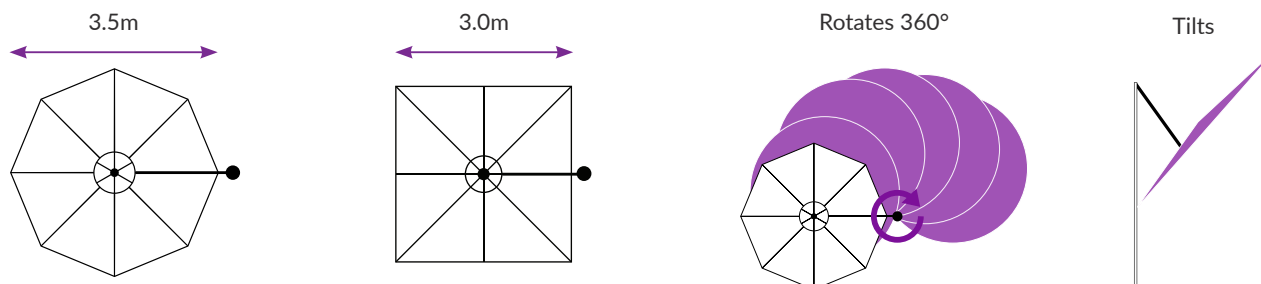
Fabric  
Warranty



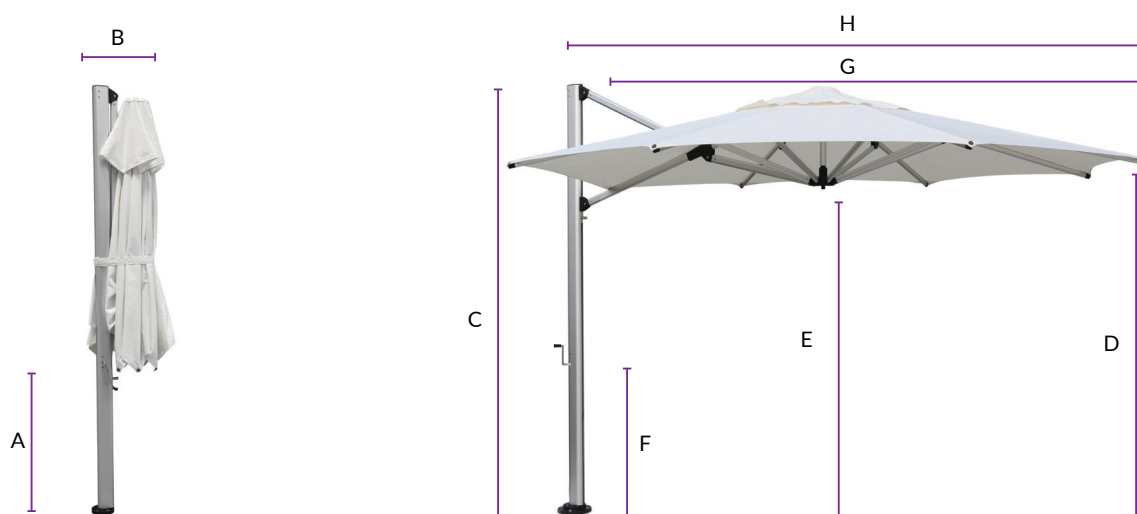
Frame  
Warranty

## TILTING OFFSET UMBRELLA

### Size & Configuration



### Umbrella Dimensions



#### Diagram Legend

	3.5m Octagon	3.0m Square
<b>A</b> Clearance of Closed Strut Arms*	864mm	483mm
<b>B</b> Depth of Umbrella When Closed	508mm	508mm
<b>C</b> Overall Height*	2718mm	2744mm
<b>D</b> Height to Edge of Canopy*	2134mm	2032mm
<b>E</b> Height to Centre Hub*	2032mm	1931mm
<b>F</b> Handle Height*	889mm	889mm
<b>G</b> Canopy Width	3480mm	2998mm
<b>H</b> Centre of Mast to Outside Edge of Canopy	3582mm	3353mm

\*Free-Standing Base installations will add 177mm to the height and surface plates will add 12mm to the height. Adding Free-Standing Base wheels also will add a further 45-80mm. All sizings are approximate only and subject to change without notice.

